

VPN into the NMSBVI Campus – How To Guide

NMSBVI VPN

Table of contents:

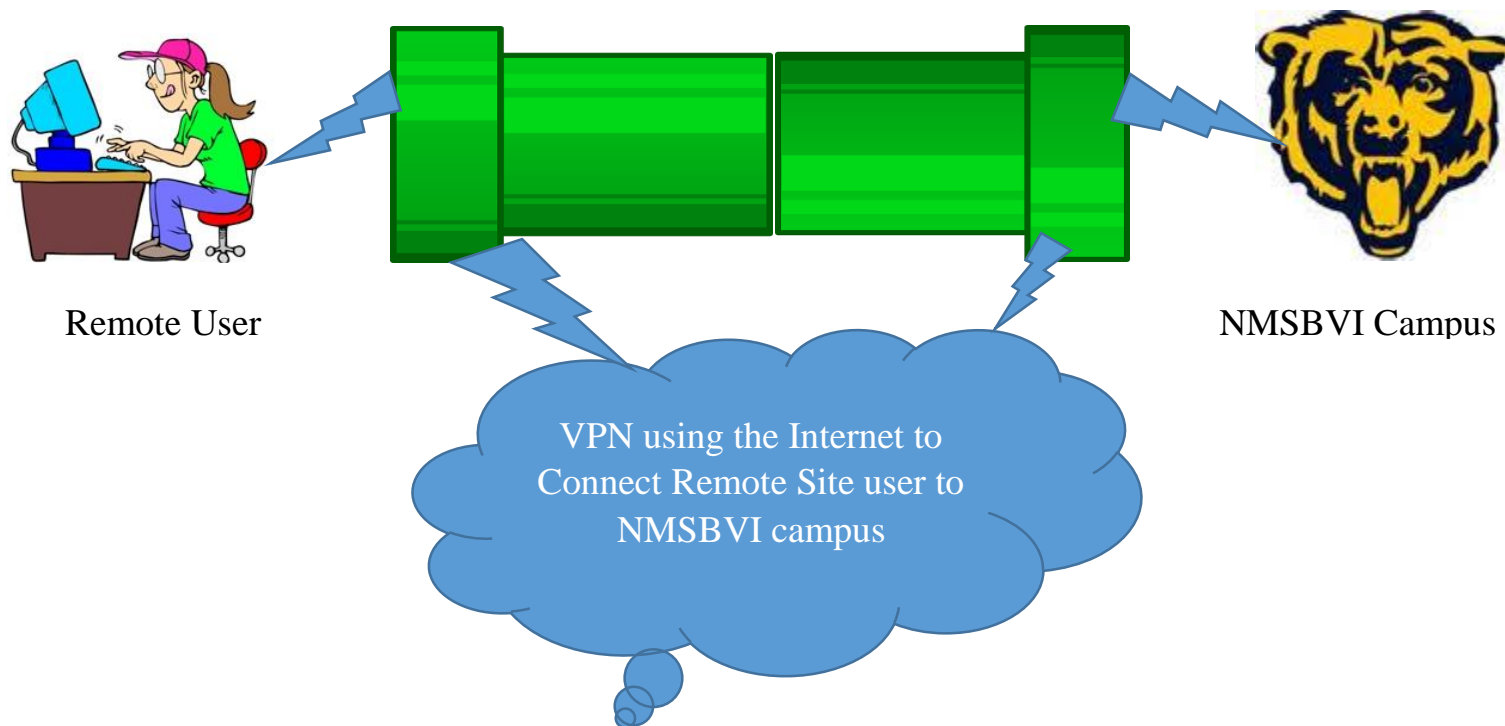
- | | |
|---|-----------|
| A. What is a VPN and how will I use it. | Page 2 |
| B. User Requirements before accessing the NMSBVI VPN. | Page 3 |
| C. How to VPN into NMSBVI and access network resources. | Page 4-10 |



VPN into the NMSBVI Campus – How To Guide

A. What is a VPN and how will I use it

A Virtual Private Network (VPN) uses tunneling on the internet to connect remote sites to the NMSBVI Campus Network. By accessing the NMSBVI VPN users will be able to access NMSBVI network resources from off campus remote sites safely and securely just as if they were sitting on campus. Even though a VPN uses the internet, as of this date VPNs are almost impossible to break into or interface with.



VPN into the NMSBVI Campus – How To Guide

B. User Requirements before accessing the NMSBVI VPN

Before accessing the VPN the remote user must have an active Internet connection. Connections can be Wired or over WiFi.



OR



Wired Internet connection Icon

OR



WiFi Internet Connection Icon

VPN into the NMSBVI Campus – How To Guide

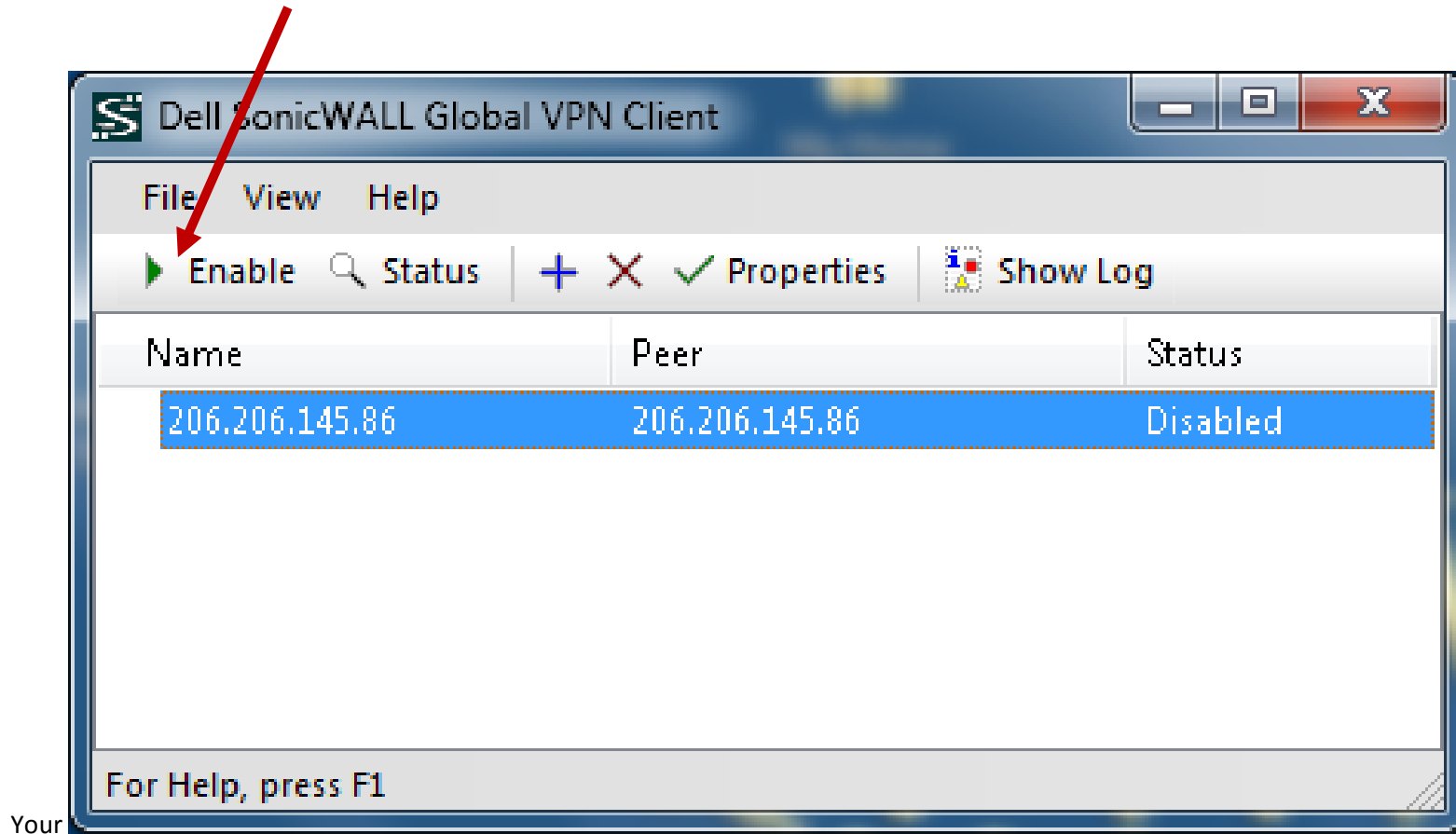
C. How to VPN into NMSBVI and access network resources

1. On your desktop, double-click the icon for “VPN to NMSBVI Campus.”



VPN into the NMSBVI Campus – How To Guide

2. Click on “Enable.”



Your

VPN into the NMSBVI Campus – How To Guide

3. Enter your Username & Password.


206.206.145.86

Enter Username / Password
This peer requires that you log in with a username and password.

Please enter your use name and password assigned to you by your network administrator.

Username:

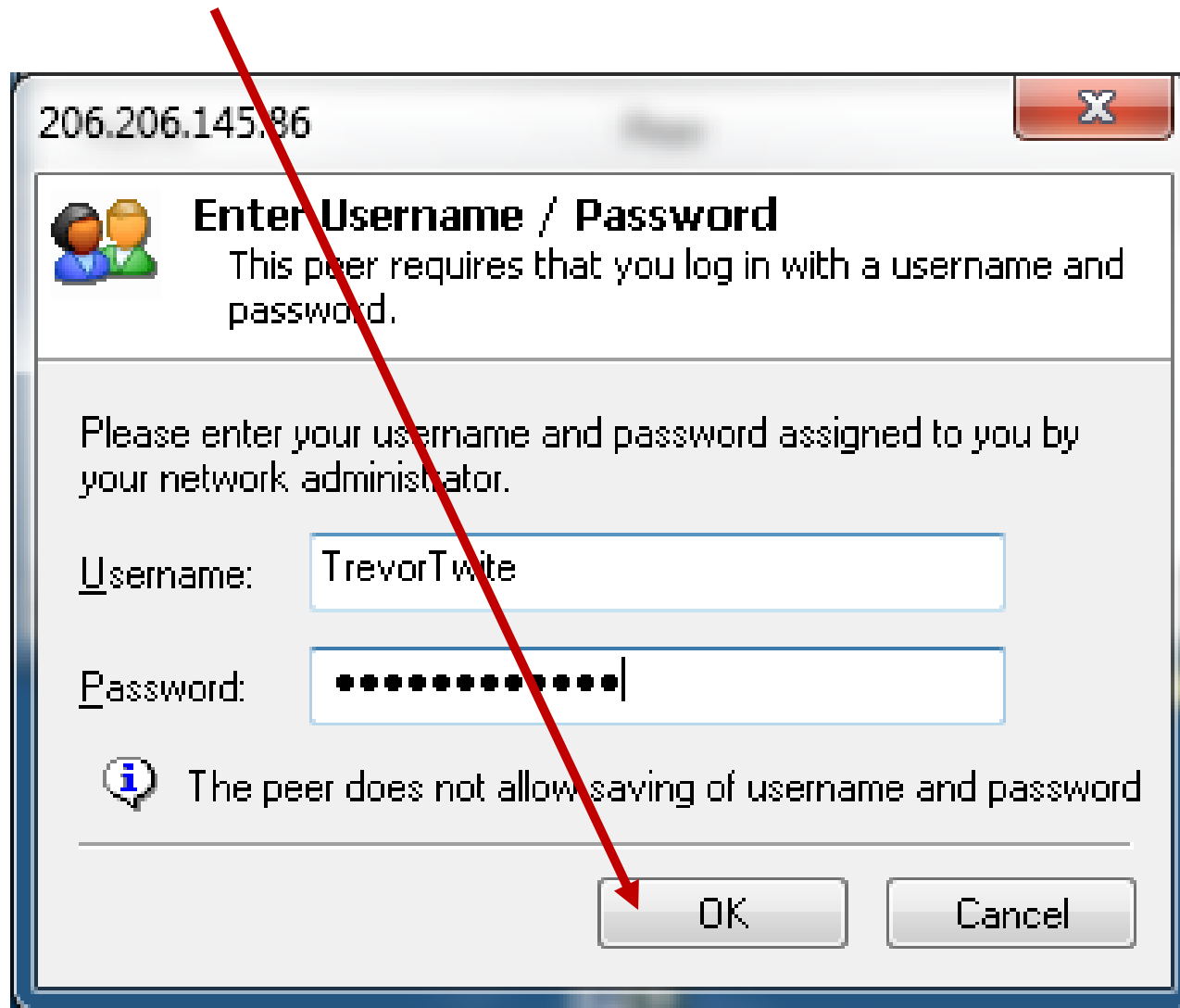
Password:

 The peer does not allow saving of username and password

OK Cancel

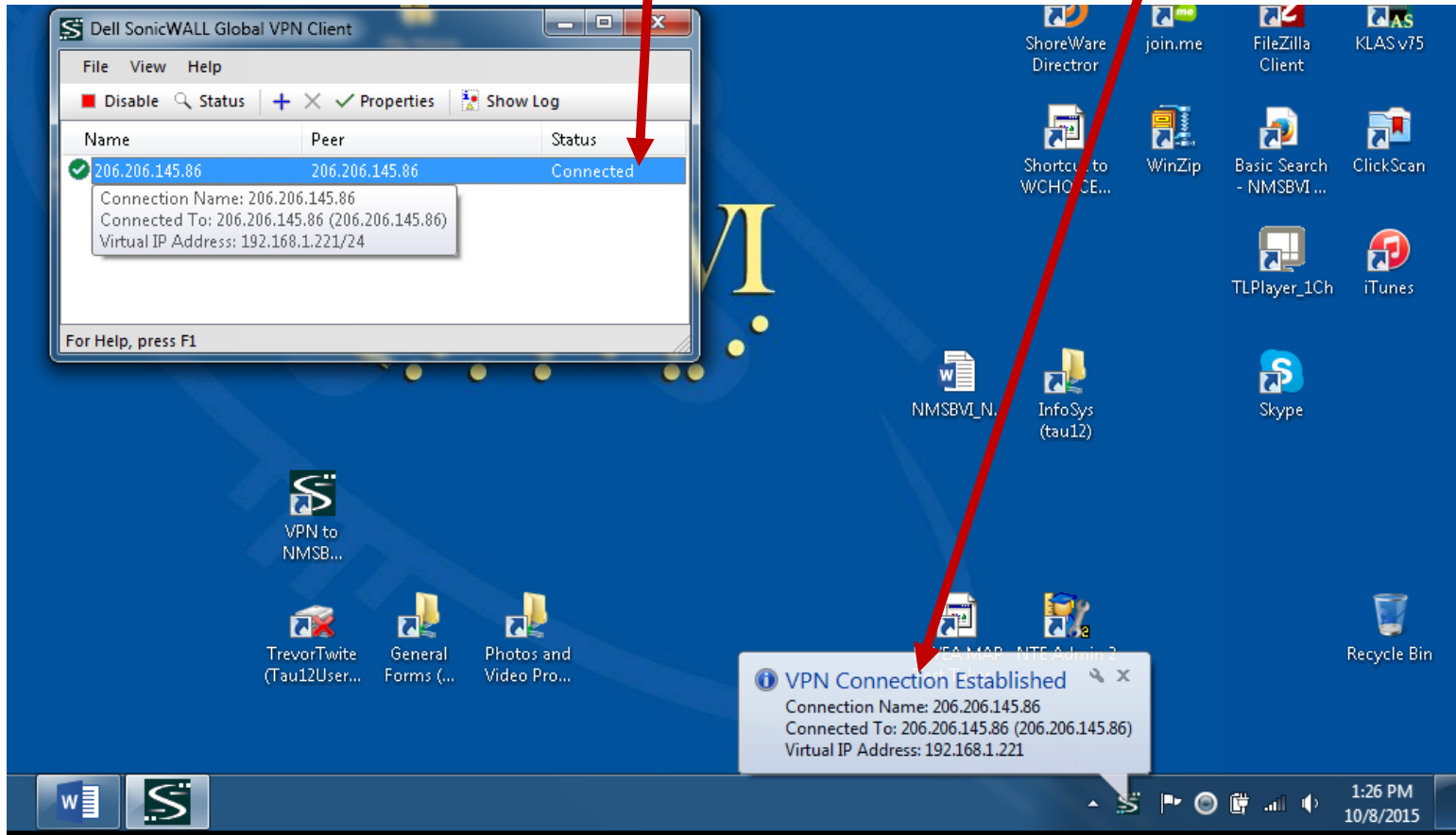
VPN into the NMSBVI Campus – How To Guide

4. Click on the “OK” button.



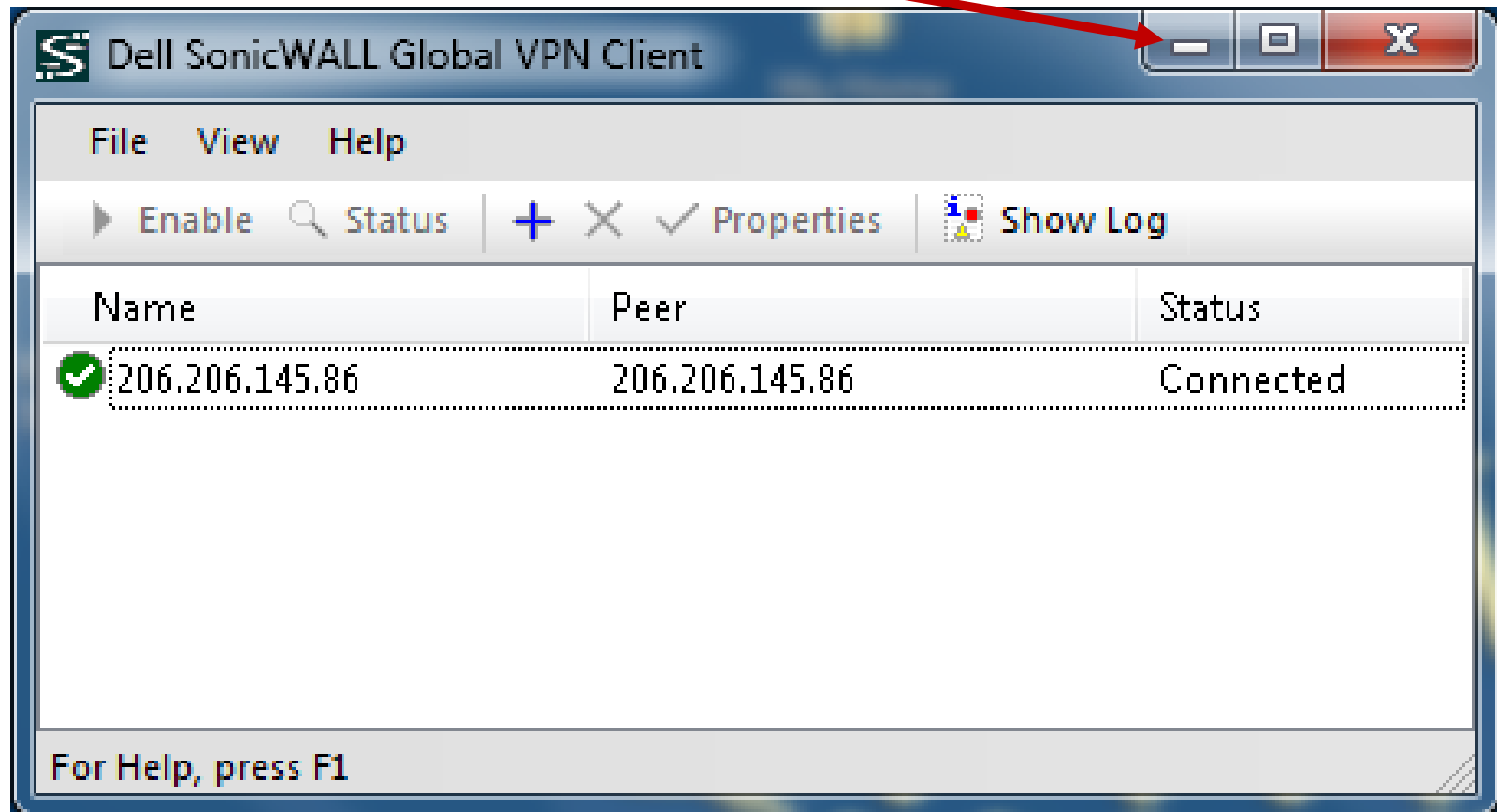
VPN into the NMSBVI Campus – How To Guide

5. Once connected you will see, “Connected” in the status column and “VPN Connection Established” in the taskbar.



VPN into the NMSBVI Campus – How To Guide

6. Click on the “Minimize” button to minimize the VPN Client window.



VPN into the NMSBVI Campus – How To Guide

Congratulations, from here you can access NMSBVI's network resources as if you were on campus. You can access NMSBVI campus resources, such as Microsoft Office Outlook, your Home Drive, and other Network Resources. Some of these resources are on your desktop as icons and others may be under the Computer icon on your desktop.

Once you are done using the VPN Click on "Disable" and click on the "X" button to close the VPN Client window.

